

**COMPLETE GUIDE**

**To our InsuraMatch  
Partnership**

01

---

# What is InsuraMatch?

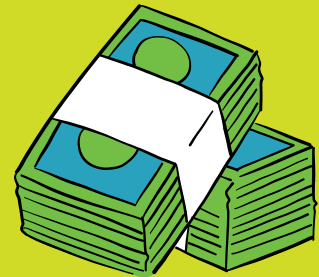
InsuraMatch is a national, independent insurance agency where you'll find a different kind of insurance shopping experience – one that's consultative and focused on finding you the right insurance, not just selling.



How do they differ from other companies?

## Multiple Quotes at One Time

They run quotes from the biggest companies to find you the best deals, and all you have to do is submit your info once!



## No Pressure!

There is no pressure when using InsuraMatch, so choose the plan that best fits you!



# How Can Students Start?

## Get Their License!

To start with any insurance you will need to have a license first. We recommend all students take the Full Driver Education Program to qualify for the best possible discounts.



## Understand What the State Requires

All states differ in what the minimum insurance needs to be. Check out your states requirements at [CT.GOV](https://www.ct.gov) or [MA.GOV](https://www.ma.gov)



## Learn About our Partnership!

[https://www.insuramatch.com/partners/  
thenextstreet](https://www.insuramatch.com/partners/thenextstreet)

03

---

# What Can My Student Expect?

Each insurance company offers different rates, packages, bonuses and more! You can expect to receive a thorough comparison and breakdown from InsuraMatch to help them choose.



## What Do They Provide?

They cover almost everything not just Auto Insurance!  
When you get in touch with them let them know everything you are looking to get coverage for, and what can join in your umbrella. This may lead to even better savings!

## How Can We Get in Touch?

Get in touch with our partners easily through an online submission, or give them a call at (844) 755 7492 and tell them The Next Street sent you!